

Deckote®

DECK COATING

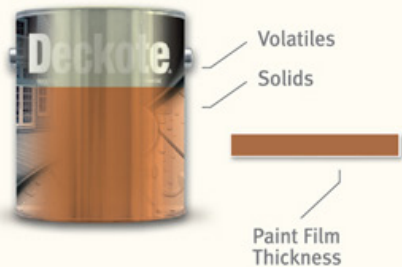
Application Guide

CONSOLIDATED  COATINGS

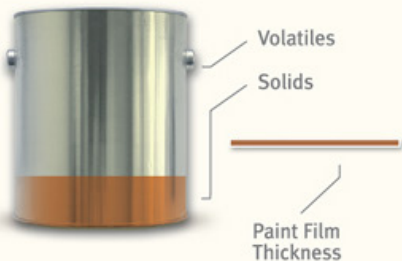
ABOUT DECKOTE

Typical Paint Solids

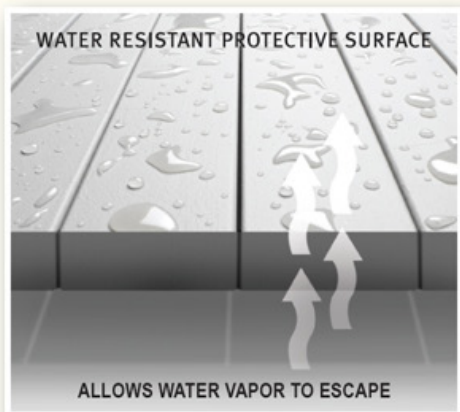
Deckote.



OTHER PAINTS



Deckote Breathes



DECKOTE IS THE INDUSTRY LEADER IN HEAVY DUTY DECK COATINGS.

Deckote was designed in 1975 as a heavy duty, semi-industrial coating system for horizontal surfaces. This water based, 100% acrylic elastomeric coating, has been successfully used on millions of square feet of sun decks, porches, patios, roof decks, stairs, landings, boat decks, tennis courts, railings, basement floors, work areas, walkways, and many other surfaces.

There are many cases in which Deckote has lasted for more than 10 years under all sorts of weather conditions.

This has been possible due to the very high solids in Deckote. Solids include the acrylic resin and select pigments that are left behind after the paint has dried. The other portion that evaporates as the paint dries is called volatiles. They serve to assist in the application of the paint but do not contribute to the final film.

This high solids and subsequent high film build are the reason Deckote achieves its legendary wear and weather resistance.

This tough film also has the ability to allow water vapor to vent through the film while at the same time provides a water-resistant protective coating. This "breathing effect" helps prevent blistering and increase adhesion.

PLANK DECKING



NEW WORK

If the decking is pressure treated, make sure it is the “paintable” type of treatment. Otherwise, the planks should be allowed to weather for 1 year, prior to painting.

The natural texture of wood is desirable but small cracks and imperfections can be filled with Deckote Crack Filler.

This filler is designed to fill of 1/8” depression per application. If a defect is deeper than that, apply additional coats of Deckote Crack Filler allowing 24 hours drying time between coats.

If the deck is uninstalled, it is recommended to prime the planks with Deckote Primer on all 4 sides. Then install the deck and apply 1 coat of Deckote Basecoat (either regular Basecoat or Safe-T-Tred Basecoat if a more slip resistant finish is desired) to the edges and top surfaces, allowing 24 hours to dry. Apply 1 coat of Deckote color coat and allow 24 hours to dry. Allow 7 days for a full cure before placing any heavy objects on the deck.

PREVIOUSLY PAINTED

Remove all loose paint, grease, dust and dirt. Prime all exposed wood with Deckote Primer. If a more skid resistant finish is desired, apply a coat of Deckote Safe-T-Tred Basecoat using Deckote Texture Roller prior to the application of the color coat allowing 12 to 24 hours drying. Apply 1 coat of Deckote Color Coat and allow 24 hours to dry. If you are putting outdoor furniture on the finished deck allow a few extra days curing for the coating to harden up prior to putting BBQ's and furniture on the deck.

CONCRETE



NEW WORK

Fresh Concrete should be allowed to fully cure for 1 month prior to application of Deckote. If the concrete was power trolled to a smooth finish it should be etched with muriatic acid to provide better adhesion. After the concrete has been etched it should be rinsed with plenty of fresh water and allowed to dry.

Apply 1 coat of Deckote Primer allowing 4 hours drying followed by 1 coat of Deckote Basecoat (use regular Basecoat or non-skid Basecoat if a more slip resistant finish is desired) allowing 12 to 24 hours drying. Apply 1 coat of Deckote Color Coat allowing 24 hours drying. If you are putting outdoor furniture on the finished deck allow a few extra days curing prior to putting BBQ's and furniture on the deck.

PREVIOUSLY PAINTED

Remove all loose paint, grease, dust and dirt. Prime all exposed concrete with Deckote Primer allowing 4 hours to dry. Apply 1 generous coat of Deckote color coat.

If a more skid resistant finish is desired, apply a coat of Deckote Non Skid Basecoat prior to the application of the color coat. Allow 24 hours drying between coats and allow a few extra days of curing prior to placing BBQ's and deck furniture on the deck.

PLYWOOD



NEW WORK

Start your project by building your new deck with the best materials. Follow Local and National building codes paying special attention to the plywood sheathing and the slope of the deck. We recommend exterior grade plywood (good one side / that side up) and a generous slope away from the house structure to prevent any "ponding" of rainwater. Use stainless or heavy galvanized screws or nails to fasten the plywood to the stringers.

Fill cracks, screw holes, and minor defects in the plywood surface with Deckote Crack Filler. This filler is designed to fill a maximum of 1/8" depression per application. If a defect is deeper than that apply additional coats of Deckote Crack Filler allowing 24 hours drying time between coats. Tape joints with Deckote Fibra Tape. Tape flashing around posts and drip flashing at the perimeter of the deck. To apply Deckote Fibra Tape first apply a generous coat of Deckote Primer, then, while the primer is still wet embed the tape and smooth out all wrinkles and let dry at least 2 hours. Apply 1 coat of Deckote Primer over the entire surface allowing 4 hours drying followed by 1 coat of Deckote Basecoat (use regular base coat or non-skid Basecoat if a more slip resistant finish is desired) allowing 12 to 24 hours drying. Apply 1 coat of Deckote Color Coat and allow 24 hours to dry. If you are putting outdoor furniture on the finished deck allow a few extra days curing for the coating to harden up prior to putting BBQ's and furniture on the deck.

PREVIOUSLY PAINTED

Remove all loose paint, grease, dust and dirt. Prime all exposed plywood with Deckote Primer. Apply 1 generous coat of Deckote color coat. If a more skid resistant finish is desired, apply a coat of Deckote Non Skid Basecoat prior to the application of the color coat.

STAIRS & LANDINGS



NEW WORK

LANDINGS

If the landing is concrete, plywood or plank then refer to the information earlier in this guide.

As these areas are more prone to traffic it is recommended that the Deckote Non Skid Basecoat be used. This adds a texture that improves the slip resistance of the surface.

STAIRS

Apply a coat of Deckote Primer, and let dry at least 2 hours followed by 1 coat of Deckote Non Skid Basecoat allowing 12 to 24 hours drying.

Then apply 1 coat of Deckote Color Coat allowing 24 hours to dry.

PREVIOUSLY PAINTED

If the landing is concrete, plywood or plank then refer to the information earlier in this guide.

Remove all loose paint, grease, dust and dirt. Prime all exposed areas with Deckote Primer. Apply 1 generous coat of Deckote Non Skid Basecoat allowing 12 to 24 hours drying. Then apply 1 coat of Deckote Color Coat allowing 24 hours to dry.

VINYL/COMPOSITE/FIBERGLASS

NEW WORK

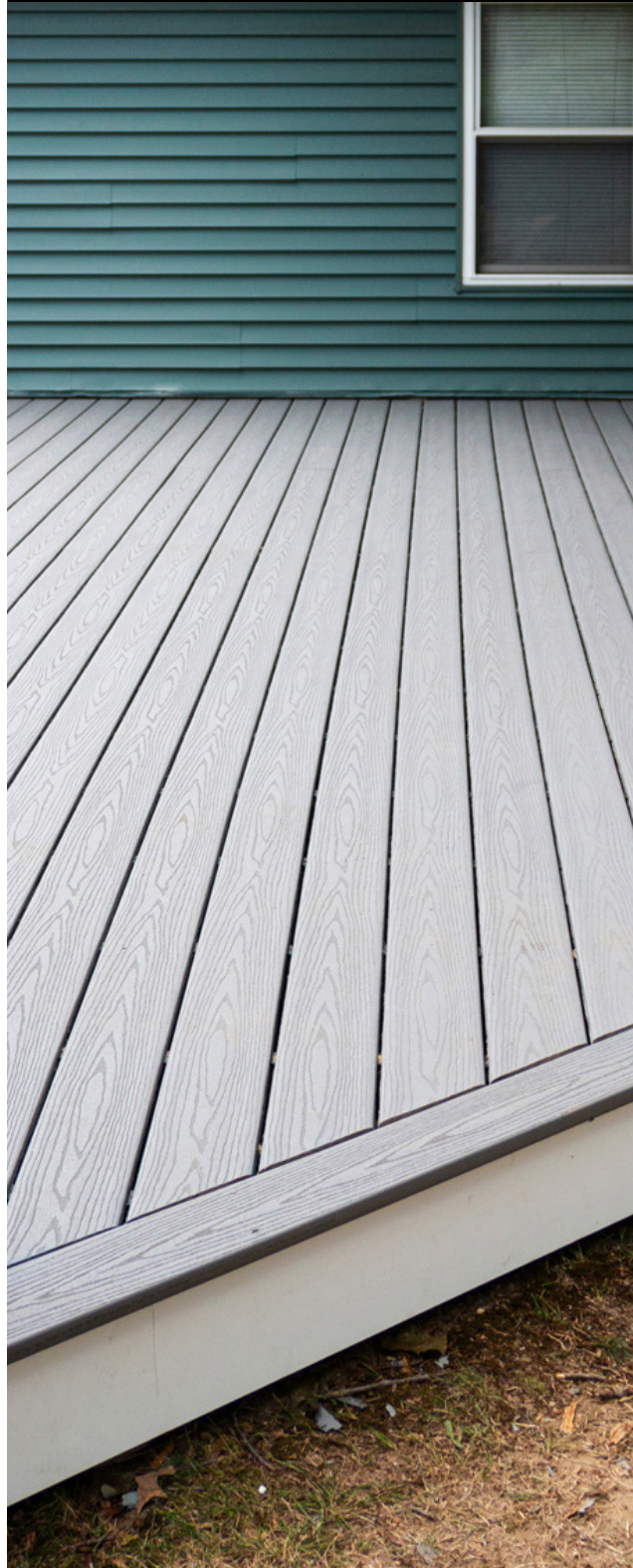
Apply 1 coat of Deckote Primer allowing 4 hours drying followed by 1 coat of Deckote non-skid Basecoat if a more slip resistant finish is desired, allowing 12 to 24 hours drying.

Apply 1 coat of Deckote Color Coat allowing 24 hours drying. If you are putting outdoor furniture on the finished deck allow a few extra days curing prior to putting BBQ's and furniture on the deck.. This filler is designed to fill of 1/8" depression per application. If a defect is deeper than that, apply additional coats of Deckote Crack Filler allowing 24 hours drying time between coats.

PREVIOUSLY PAINTED

Remove all loose paint, grease, dust and dirt with Deckote cleaner.

Prime with Deckote Primer allowing 4 hours to dry. Apply 1 generous coat of Deckote color coat. If a more skid resistant finish is desired, apply a coat of Deckote Non Skid Basecoat prior to the application of the color coat. Allow 24 hours drying between coats and allow a few extra days of curing prior to placing BBQ's and deck furniture on the deck.



COVERAGE CHART

APPLICATION & MAINTENANCE TIPS

The following guide will assist you in purchasing at the most economical package size.

DECK SIZE	PRIMER	BASE COAT	COLOUR COAT
(100 ft ²) 9.3m ²	1 Qt.*	1 Gal.*	1 Gal.*
(150 ft ²) 14m ²	2 Qt.	2 Gal.	2 Gal.
(200 ft ²) 18.75m ²	1 Gal.	2 Gal.	2 Gal.
(250 ft ²) 23.3m ²	1 Gal.	1 Pail*	1 Pail
(300 ft ²) 28m ²	1 Gal.	1 Pail	1 Pail
(350 ft ²) 32.7m ²	1 Gal.	1 Pail + 1 Gal.	1 Pail + 1 Gal.
(400 ft ²) 37.35m ²	1 Gal. + 1 Qt.	1 Pail + 2 Gal.	1 Pail + 2 Gal.
(450 ft ²) 42m ²	1 Gal. + 1 Qt.	1 Pail + 2 Gal.	1 Pail + 2 Gal.
(500 ft ²) 46.7m ²	1 Gal. + 2 Qt.	2 Pail	2 Pail
(550 ft ²) 51.4m ²	1 Gal. + 2 Qt.	2 Pail	2 Pail
(600 ft ²) 56m ²	2 Gal.	2 Pail	2 Pail
(650 ft ²) 60.6m ²	2 Gal.	2 Pail + 1 Gal.	2 Pail + 1 Gal.
(700 ft ²) 65.4m ²	2 Gal.	2 Pail + 1 Gal.	2 Pail + 1 Gal.
(750 ft ²) 70m ²	2 Gal.	2 Pail + 2 Gal.	2 Pail + 2 Gal.
(800 ft ²) 74.7m ²	2 Gal. + 1 Qt.	2 Pail + 2 Gal.	2 Pail + 2 Gal.
(850 ft ²) 79.4m ²	2 Gal. + 1 Qt.	3 Pail	3 Pail
(900 ft ²) 84m ²	2 Gal. + 2 Qt.	3 Pail	3 Pail
(950 ft ²) 88.7m ²	3 Gal.	3 Pail + 1 Gal.	3 Pail + 1 Gal.
(1000 ft ²) 93.4m ²	3 Gal.	3 Pail + 1 Gal.	3 Pail + 1 Gal.

*Qts. shown = .946 litre

*Gals. shown = 3.78 litre

*Pails shown = 2.64 Gal. = 10 litre

APPROXIMATE COVERAGE

Deckote Primer 350Sq. Ft. (32 Sq. M) per Gallon.

Deckote Base Coats 100 Sq. Ft. (9.3 Sq. M) per

Gallon. Deckote Color Coats 100 Sq. Ft. (9.3 Sq. M) per Gallon.

RECOAT DRYING PARAMETERS at 25 Degrees C

- Primer 4 hours • Base Coats 12 hours.
- Color Coats 12 hours.
- Time to walk on coated deck 24 hours after last coat.
- Time to place furniture on deck 3 days.
- Time to achieve full cure 14 days.

Do's

- Apply in moderate temperatures
- Apply even coats at the spreading
- Rates shown above

Dont's

- Apply when the is below 10 Degrees C
- Apply in the direct sun
- Apply when rain is forecast in the next 24 hours

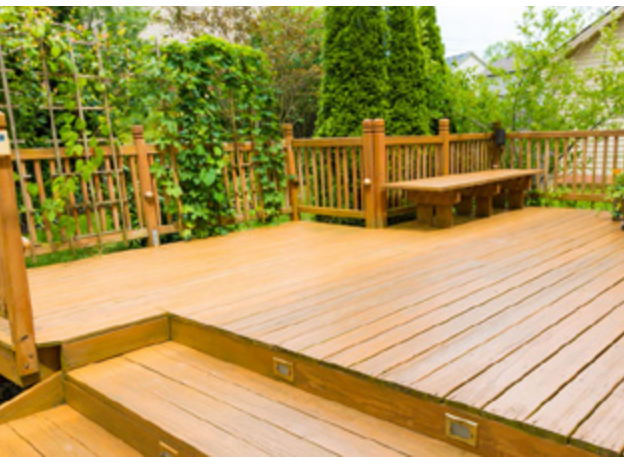
WEEKEND WARRIOR PROJECT SCHEDULE

New Deck

- 1.) Start Saturday morning by filling small cracks with crack filler, prime (and tape plywood).
- 2.) After lunch apply base coat of choice.
- 3.) Sunday morning topcoat with color of choice.
- 4.) Walk on by Monday.
- 5.) Furniture on by Wednesday.

Existing Deck Re-coat

- 1.) Start Saturday with a clean deck. Fill small cracks and prime any exposed wood with Deckote Primer.
- 2.) After lunch topcoat with Deckote color coat.
- 3.) Walk on by Sunday.
- 4.) Furniture on by Tuesday.



Deckote
DECK COATING

COLOR

slate



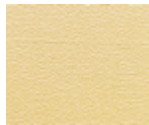
17-0490

charcoal



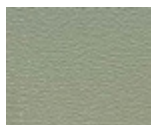
17-0491

cedar



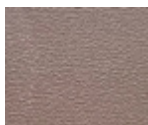
17-0492

rustic green



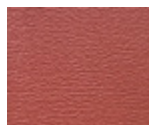
17-0493

cottage brown



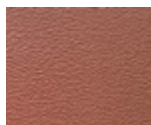
17-0502

terra cotta



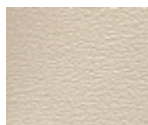
17-0503

red cedar



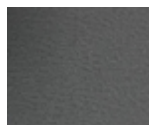
17-0504

driftwood



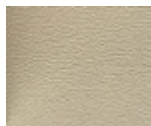
17-0508

lava



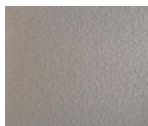
17-0506

beach



17-0507

moss



17-0508

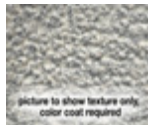
BASECOATS

Base Coat



17-0495

Safe-T-Tred



17-0494

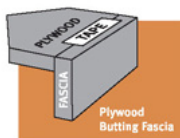
Extend the life of your deck by following these simple steps.

CLEANING

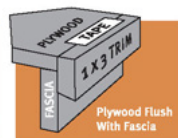
Use a good, readily available cleaner at least once a year to keep your deck clean. Pressure washers can be used but keep the cleaning tip at least 12 inches away from the coating.

APPLY A FRESH TOP COAT

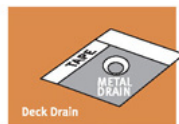
One of the nice features of Deckote is that if the color coat has worn through, the base coat underneath is still protecting the deck. If the base coat starts to appear, apply a new coat of Deckote Color Coat. This is recommended on heavy traffic areas such as stairs, landings and areas close to doorways. Otherwise, apply a fresh coat every 3 years or as required to the general areas in order to keep a nice, fresh appearance.



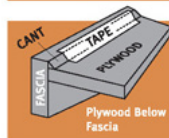
Plywood Butting Fascia



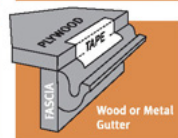
Plywood Flush With Fascia



Deck Drain



Plywood Below Fascia



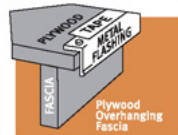
Wood or Metal Gutter



Wooden Post



Typical Wall



Plywood Overhanging Fascia

Plywood Deck Tape Details



GUARANTEE

Consolidated Coatings Corporation guarantees the satisfactory performance of Deckote when the complete Deckote system is applied and maintained according to the manufacturer's instructions. If this product does not meet these specifications, Consolidated Coatings Corporation will, at its option and upon proof of purchase, either furnish an equivalent amount of new product to you or refund the purchase price of this product. Consolidated Coatings Corporation will not be responsible for labor or the cost of labor for removal or application of any product; or any incidental or consequential damages, whether based on breach of express or implied warranty, negligence, strict liability or any other legal theory. Some jurisdictions do not allow the exclusion or limitation of incidental or consequential damages, so the above limitation or exclusion may not apply to you. This warranty gives you specific legal rights and you may also have other rights, which vary from each jurisdiction to another.

WARNING! IRRITANT! HARMFUL IF SWALLOWED.

MAY CAUSE EYE, NOSE AND THROAT IRRITATION.

AVOID CONTACT WITH SKIN AND EYES AND AVOID BREATHING OF VAPORS AND SPRAY MIST. WEAR EYE PROTECTION AND PROTECTIVE CLOTHING.

USE ONLY WITH ADEQUATE VENTILATION. To avoid breathing vapors and spray mist, open windows and doors or use other means to ensure fresh air entry during application and drying. If you experience eye watering, headaches or dizziness, increase fresh air. If properly used, a respirator (NIOSH approved) may offer additional protection; obtain professional advice before using. A dust mask does not provide protection against vapors. Avoid contact with eyes and skin. Wash thoroughly after handling. Close container after each use. **FIRST AID:** If you experience difficulty in breathing, leave the area to obtain fresh air. If continued difficulty is experienced, get medical assistance immediately. In case of eye contact, flush immediately with plenty of water for at least 15-20 minutes and get medical attention; for skin, wash thoroughly with soap and water. If swallowed, get medical attention immediately. ***WARNING! If you scrape, sand or remove old paint, you may release lead dust. LEAD IS TOXIC.**

EXPOSURE TO LEAD DUST CAN CAUSE SERIOUS ILLNESS, SUCH AS BRAIN DAMAGE, ESPECIALLY IN CHILDREN. PREGNANT WOMEN SHOULD ALSO AVOID EXPOSURE.

Wear a NIOSH-approved respirator to control lead exposure. Clean up carefully with a HEPA vacuum and a wet mop. Before you start, find out how to protect yourself and your family by contacting the National Lead Information **Hotline at 1-800-424-LEAD or log on to www.epa.gov/lead.**